

**THE ULTIMATE PIPING SOLUTION**

**AIRNET**

**Fast, Easy, Reliable**

**Atlas Copco**



Delivering quality air exactly where you need it, at the right pressure and at the lowest possible cost, Atlas Copco's innovative AIRnet compressed air piping system complements any compressed air project. Manufactured with only the highest quality elements and distinguishing itself through flexibility and ease of installation, AIRnet meets all of your design and production requirements.

### Reduced energy costs

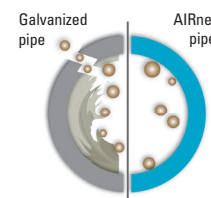
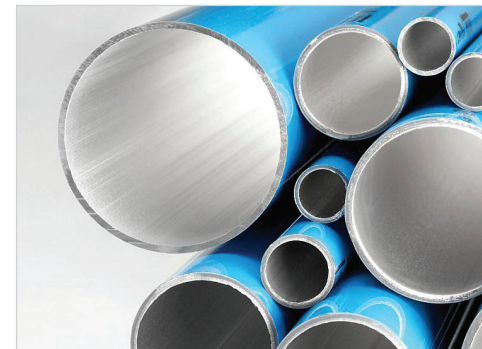
- AIRnet significantly reduces your operating costs by providing more air flow with less pressure drop thanks to its ultra smooth inner surface.
- AIRnet's corrosion-free pipe and fittings minimize the risk of leakage and maintain constant pressure drop over time.
- Reducing pressure drop allows maintaining a lower regulated pressure resulting in less maintenance and higher efficiency - 14.5 psi reduction results in 7% energy savings.

### Time saving

- AIRnet Pre Fit (PF) series offers pre-torqued fittings.
- A gentle push of the pipe into the fittings is all it takes. The connection is made within seconds!
- AIRnet can be installed in 30% of the time compared to traditional systems.
- AIRnet pipe is lightweight, weighing about 5 times less than galvanized pipe of a similar size.
- No threading, welding, soldering, or crimping equipment is needed.
- AIRnet components are reusable, making modifying a system quick and easy.

### Built to last

- The AIRnet piping system is resistant to corrosion, mechanical shocks, fire, and thermal variations.
- Providing consistent clean air, AIRnet systems ensure longevity of your equipment and increase the lifetime of filtration elements.
- In line with the high quality performance of our AIRnet product range, pipes and fittings come with a 10 year warranty.

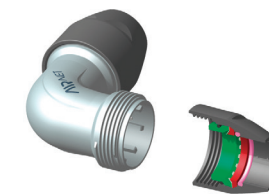


### Constant air quality

AIRnet delivers constant quality air from the point of generation to the various points of use, protecting downstream equipment and manufacturing processes, maintaining required system pressure, and reducing network maintenance.

### AIRnet fitting assembly

AIRnet's simple assembly allows pipe to be pushed into the fitting. The fittings are designed with a large inner body that minimizes air flow restriction and pressure drop. Inlet guides ensure proper alignment of the pipe and the stainless steel clinch ring maximizes grip strength.

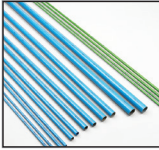


### Patented design

AIRnet quick drops are specifically designed to allow drop leg extensions to be connected to a distribution line or main ring in minimum time. These fittings provide connection on the side or top of the pipe eliminating the risk of condensation at the point of end use. AIRnet wall mounted manifolds are designed with three 1/2" NPT threaded port outlets and a manual drain valve at the lowest point for simple condensation checks.

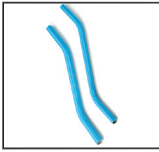


### Aluminum Pipe



PART NUMBER	OUTSIDE DIM (in.)	OUTSIDE DIM (mm)	LENGTH (ft.)	LENGTH (mm)
2811 1000 01	3/4	20	18.70	5.7
2811 2000 01	1.0	25	18.70	5.7
2811 4000 01	1 1/2	40	18.70	5.7
2811 5000 01	2.0	50	18.70	5.7
2810 6600 01	2 1/2	63	18.70	5.7
2810 7700 01	3.1	80	18.70	5.7
2810 8000 00	4.0	100	18.70	5.7
2811 9000 00	6.0	158	18.70	5.7

### S-Bend



PART NUMBER	OUTSIDE DIM (in.)	OUTSIDE DIM (mm)	LENGTH (in.)
2810 1001 05	3/4	20	19.70
2810 2001 05	1.0	25	19.70

### Equal Union PF Series



PART NUMBER	OUTSIDE DIM (in.)	OUTSIDE DIM (mm)
2811 1002 80	3/4	20
2811 2002 80	1.0	25
2811 4002 80	1 1/2	40
2811 5002 80	2.0	50
2810 6002 00	2 1/2	63
2810 7002 00	3.0	80
2810 8002 00	4.0	100
2810 9002 00	6.0	158

### Reducing Union PF Series



PART NUMBER	OUTSIDE DIM (in.)	OUTSIDE DIM (mm)	REDUCED DIM (in.)	REDUCED DIM (mm)
2811 2121 80	1.0	25	3/4	20
2811 4221 80	1 1/2	40	1.0	25
2811 5421 80	2.0	40	1 1/2	40
2811 6521 80	2 1/2	50	2.0	50
2810 7621 00	3.0	63	2.5	63
2810 8721 00	4.0	80	3.0	80
2810 9821 00	6.0	158	4.0	80

### Elbow 90° PF Series



PART NUMBER	OUTSIDE DIM (in.)	OUTSIDE DIM (mm)
2811 1003 80	3/4	20
2811 2003 80	1.0	25
2811 4003 80	1 1/2	40
2811 5003 80	2.0	50
2810 6003 00	2 1/2	63
2810 7003 00	3.0	80
2810 8003 00	4.0	100
2810 9003 00	6.0	158

### Elbow 45° PF Series



PART NUMBER	OUTSIDE DIM (in.)	OUTSIDE DIM (mm)
2811 1004 80	3/4	20
2811 2004 80	1.0	25
2811 4004 80	1 1/2	40
2811 5004 80	2.0	50
2810 8004 00	4.0	100
2810 9004 00	6.0	158

### Equal Tee PF Series



PART NUMBER	OUTSIDE DIM (in.)	OUTSIDE DIM (mm)
2811 1005 80	3/4	20
2811 2005 80	1.0	25
2811 4005 80	1 1/2	40
2811 5005 80	2.0	50
2810 6005 00	2 1/2	63
2810 7005 00	3.0	80
2810 8005 00	4.0	100
2810 9005 00	6.0	158

### Reducing Tee PF Series



PART NUMBER	OUTSIDE DIM (in.)	REDUCED DIM (in.)	OUTSIDE DIM (mm)	REDUCED DIM (mm)
2811 2107 80	1.0	3/4	25	20
2811 4107 80	1 1/2	3/4	40	20
2811 4207 80	1 1/2	1	40	25
2811 5107 80	1 1/2	1	50	20
2811 5207 80	1 1/2	1	50	25
2811 5407 80	2.0	1 1/2	50	40
2811 6507 80	2.5	2	63	50
2810 7607 00	3.0	2 1/2	80	63
2810 8507 00	4.0	2	100	50
2810 8607 00	4.0	2 1/2	100	63
2810 8707 00	4.0	3	100	80
2810 9707 00	6.0	3	158	80
2810 9807 00	6.0	4	158	100

### Threaded Tee (NPT) PF Series



PART NUMBER	OUTSIDE DIM (in.)	OUTSIDE DIM (mm)
2811 0009 80	3/4	20
2811 1009 80	3/4	20
2811 2009 80	1.0	25
2811 2109 80	1.0	25
2811 4209 80	1 1/2	40
2811 5209 80	2.0	50
2810 6509 00	2 1/2	63
2810 7609 00	3.0	80
2810 7709 00	3.0	50
2810 8209 00	1.0	25
2810 9209 00	1.0	25

### End Cap PF Series



PART NUMBER	OUTSIDE DIM (in.)	OUTSIDE DIM (mm)
2811 1006 80	3/4	20
2811 2006 80	1.0	25
2811 4006 80	1 1/2	40
2811 5006 80	2.0	50
2810 6006 00	2 1/2	63
2810 7006 00	3.0	80
2810 9816 00	100/158	

### Union Adaptor PF Series



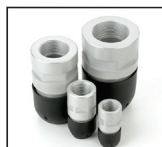
PART NUMBER	OUTSIDE DIM (in.)	OUTSIDE DIM (mm)	THREADED DIM (in.)	THREADED DIM (mm)
2811 1114 80	3/4	20	3/4	20
2811 2214 80	1.0	25	1.0	25
2811 4414 80	1 1/2	40	1 1/2	40
2811 5514 80	2.0	50	2.0	50
2810 6614 00	2 1/2	63	2 1/2	63
2810 7714 00	3.0	80	3.0	80

### Aluminum Threaded Connector Male (NPT) PF Series



PART NUMBER	OUTSIDE DIM (in.)	OUTSIDE DIM (mm)	THREADED DIM (in.)	THREADED DIM (mm)
2811 1018 80	3/4	20	1/2	12.5
2811 1118 80	3/4	20	3/4	20
2811 2118 80	1.0	25	3/4	20
2811 2218 80	1.0	25	1.0	25
2811 4318 80	1 1/2	40	1 1/4	32
2811 4418 80	1 1/2	40	1 1/2	40
2811 5418 80	2.0	50	1 1/2	40
2811 5518 80	2.0	50	2.0	50
2810 6518 00	2 1/2	63	2.0	50
2810 6618 00	2 1/2	63	2 1/2	63
2810 7618 00	3.0	80	2 1/2	63
2810 7718 00	3.0	80	3.0	80

### Aluminum Threaded Connector Female (NPT) PF Series



PART NUMBER	OUTSIDE DIM (in.)	OUTSIDE DIM (mm)
2810 6620 00	2 1/2	63

### Ball Valve – Standard



PART NUMBER	OUTSIDE DIM (in.)	Ø	
1310 0723 63	1/2" m - 1/2" f	1/2	1/2
1310 0728 84	3/4" m - 3/4" f	3/4	3/4
1310 0722 82	1/2" f - 1/2" f	1/2	1/2
1310 0722 83	3/4" f - 3/4" f	3/4	3/4
1310 0722 84	1" f - 1" f	1	1
1310 0723 78	1 1/4" f - 1 1/4" f	1 1/4	1 1/4
1310 0722 86	1 1/2" f - 1 1/2" f	1 1/2	1 1/2
1310 0722 87	2" f - 2" f	2	2
1310 0722 88	2 1/2" f - 2 1/2" f	2 1/2	2 1/2
1310 0722 89	3" f - 3" f	3	3

### Butterfly Valve



PART NUMBER	OUTSIDE DIM (in.)	OUTSIDE DIM (mm)
1606 4561 04	4.0	100
2810 9051 00	6.0	158

PART NUMBER	OUTSIDE DIM (in.)	OUTSIDE DIM (mm)
2810 0254 08	4.0	100
2810 0454 08	6.0	158

### Quick Drop PF Series



PART NUMBER	HEADER DIM (in.)	HEADER DIM (mm)	DROP DIM (in.)	DROP DIM (mm)
2811 2110 80	1.0	25	3/4	20
2811 4210 80	1 1/2	40	3/4	20
2811 4110 80	1 1/2	40	1.0	25
2811 5110 80	2.0	50	3/4	20
2811 5210 80	2.0	50	1.0	25
2811 6110 80	2 1/2	63	3/4	20
2811 6210 80	2 1/2	63	1.0	25
2811 7110 80	3.0	80	3/4	20
2811 7210 80	3.0	80	1.0	25

### Quick Drop (NPT Thread) PF Series



PART NUMBER	HEADER DIM (in.)	HEADER DIM (mm)	DROP DIM (in.)	DROP DIM (mm)
2811 2012 80	1.0	25	1/2	12.5
2811 4012 80	1 1/2	40	1/2	12.5
2811 4112 80	1 1/2	40	3/4	20
2811 5012 80	2.0	50	1/2	12.5
2811 5112 80	2.0	50	3/4	20
2811 6012 80	2 1/2	63	1/2	12.5
2811 6112 80	2 1/2	63	3/4	20
2811 7012 80	3.0	80	1/2	12.5
2811 7112 80	3.0	80	3/4	20

### Wall Mounted Manifold PF Series



PART NUMBER	DESCRIPTION	DIM (in.)	DIM (mm)
2811 1024 80	20 mm PF Series	3/4	20
2811 2024 80	25 mm PF Series	1	25

### Wall Mounted Manifold PF Series–Fem. (NPT Thread)



PART NUMBER	THREADED DIM (in.)	THREADED DIM (mm)
2811 0026 80	1/2	12.5
2811 1026 80	3/4	20

### Flange

### Flange Accessories

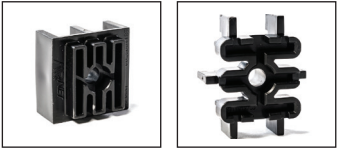
PART NUMBER	DESCRIPTION	OUTSIDE DIM (mm)
2810 6054 00	Dual use Flange	63
2810 7054 00	Dual use Flange	80
2810 8254 00	ANSI Flange	100
2810 9154 00	ANSI Flanges	150

### Pipe Clips – PF Series



PART NUMBER	DIAMETER (in.)	DIAMETER (mm.)
2811 1122 20	3/4	20
2811 2122 20	1.0	25
2811 4122 20	1.5	40
2811 5122 20	2.0	50
2811 6122 20	2.5	63
2811 7122 20	3.0	80
2811 8022 20	4.0	100
2811 9122 20	4.0	100

### Pipe Clip Spacers – PF Series



PART NUMBER	FITS SIZES	METRIC
2811 0027 10	3/4-1	20-25 mm
2811 0127 10	1 1/2-2	40-50 mm
2811 0227 10	2 1/2-3	63-80 mm
2811 0327 10	4.0	100 mm

### Threaded Rod Adapters Pipe Clips PF Series



PART NUMBER	DIAMETER (in.)
2811 0172 00	1/4-3/8"
2811 0272 00	5/16"-3/8"
2811 0372 00	MB-3/8"

### Filter-Regulator-Lubricator



PART NUMBER	DESCRIPTION	THREAD
1310 0722 99	1/2" Filter/Regulator	1/2"
1310 0722 98	1/2" Filter Reg. + Lubricator	1/2"
1310 0723 64	Replcmt. Carts. 5 microns	1/2" or 3/8"
1310 0723 66	Convert from 1/2" to 3/8" port	3/8 -1/2"
1310 0723 67	Mounting Blocks	3/8 -1/2"
1310 0723 68	Mtg. Blks. to each other & wall	3/8 -1/2"
1310 0723 79	Mounting for regulator	3/8 -1/2"
1310 0724 97	Replacement Press. Gauge	3/8 -1/2"

### Safety Couplers (1/4" Body Style)



PART NUMBER	DESCRIPTION	DIAMETER
1312 1009 41	ARO Profile - 1/4" body size	1/4" FNPT
1312 1009 42	ARO Profile - 1/4" body size	1/2" MNPT
1312 1009 46	Ind. Interchange - 1/4" body	1/4" FNPT
1312 1009 47	Ind. Interchange - 1/4" body	1/2" MNPT

### Spiral Hose



PART NUMBER	DESCRIPTION
1310 0722 90	12' - 5/16" ID
1310 0722 92	20' - 5/16" ID

### Shop Hose



PART NUMBER	DESCRIPTION	LENGTH-DIAMETER
1310 0722 96	3/8 ID 300 PSI	25' - 3/8" ID
1310 0722 97	3/8 ID 300 PSI	50' - 3/8" ID

### Hose Reels (300 psi Heavy Duty)



PART NUMBER	INSIDE DIAMETER (in.)	LENGTH-DIAMETER
1310 0722 93	1/4"	300 PSI Open (50')
1310 0722 94	3/8"	300 PSI Open (50')
1310 0722 95	3/8"	300 PSI Open (30')
1310 0723 73	1/4"	300 PSI Enclosed (50')
1310 0723 74	3/8"	300 PSI Enclosed (50')

### Flexible Hoses (NPT Thread)



PART NUMBER	DIAMETER (in.)	LENGTH (ft.)
1312 1009 50	3/4" straight	2.5
1312 1009 51	3/4" straight	4.9
1312 1009 52	1" straight	2.5
1312 1009 53	1" straight	4.9
1312 1009 54	1 1/2" straight	4.9
1312 1009 55	2" straight	4.9

### Whiplash Protection Strap

PART NUMBER	DESCRIPTION
2810 0055 00	12.5-32 mm
2810 0055 01	40-80 mm



## The complete solution

The AIRnet compressed air piping system is a complete solution from source to production thanks to its range, from 3/4" to 6", of high quality aluminum pipes, aluminum and polymer fittings, and variety of accessories.

## Fast and easy to install

Lightweight yet robust, AIRnet aluminum pipes can be installed safely by just one person with minimum training. The system can be pressurized immediately after assembly, limiting downtime to a strict minimum.

## Versatile and compatible

AIRnet's range of fittings allows you to custom-build a compressed air system to your specific production needs. It has the ability to be connected to any existing equipment or network and allows for future system expansion and modifications.

## Leakage-free

AIRnet fittings are corrosion-free. They ensure a leakage-free installation and eliminate energy waste.

## Low pressure drop

AIRnet's smooth inner aluminum surface and fitting design with full diameter eliminates air flow restriction and guarantees the lowest possible pressure drop.



THREADED CONNECTOR



QUICK DROP



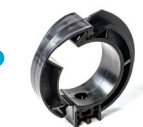
TEE CONNECTION



WALL MOUNTED MANIFOLD



ELBOW



PIPE CLIP



## *fast*

Thanks to a smart design and lightweight materials, AIRnet can be installed in 30% of the time compared to conventional systems.

## *easy*

AIRnet pipes and fittings are assembled in just a few steps by a single installer, without the need for heavy machinery.

## *reliable*

The durable, corrosion-free AIRnet pipes and fittings come with a 10-year warranty. Low friction and seamless connections minimize pressure drop.



## **COMMITTED TO SUSTAINABLE PRODUCTIVITY**

We stand by our responsibilities towards our customers,  
towards the environment and the people around us.  
We make performance stand the test of time.  
This is what we call – Sustainable Productivity.